



YARWAY

Dual range Process Traps.

Features and benefits

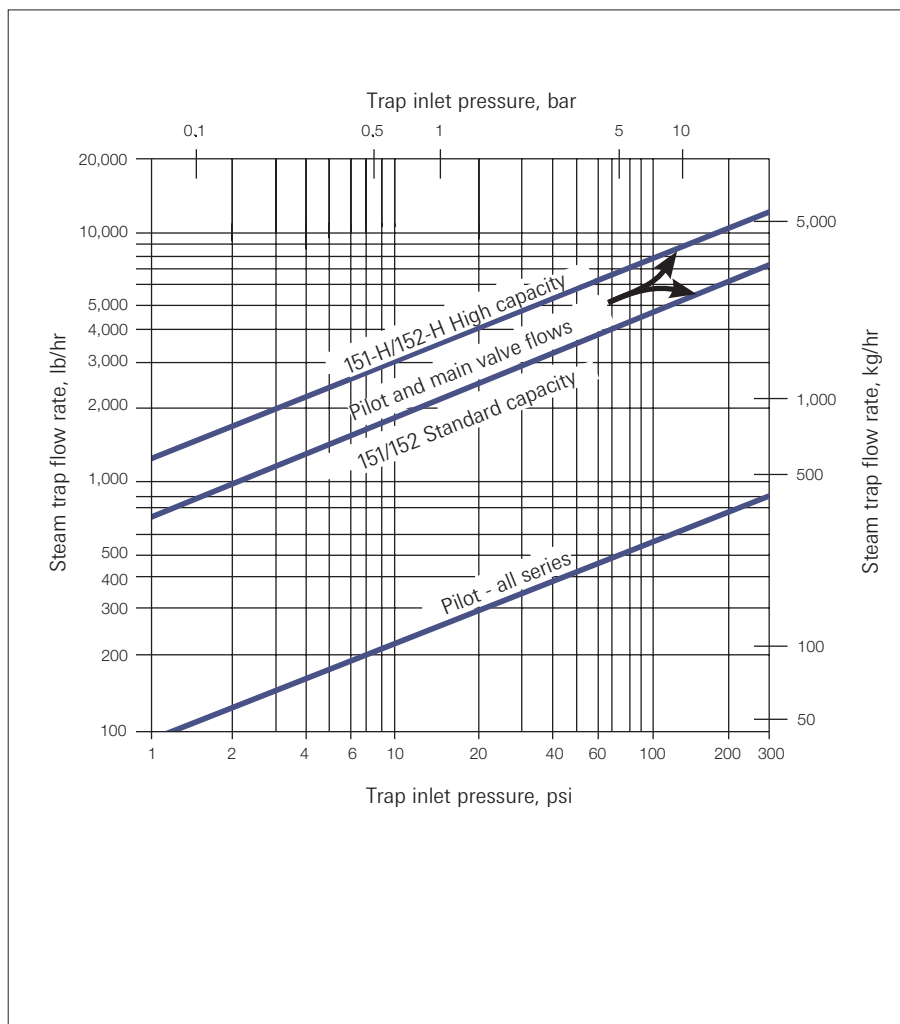
- Freeze proof performance installed with discharge horizontal
- Economical installation
- Stainless steel internals and screen
- Only two moving parts-main valve and bellows
- Short stroke of bellows from physical damage
- Cage design protects bellows from physical damage
- Converts to higher capacity with different internals. Internals are replaceable as a unit

Technical data

Max. working pressure: 21 bar
 Operating pressure : 1-300 psi (0.07-21 bar)
 Minimum Differential, 1 psi (0.07 bar)
 Max. Operating Temp. : 260°C (500°F)
 Max. Design Temp. : 400°C (750°F)
 Max. Back Pressure : 90 %
 Size Range : 1/2" - 3/4" - 1"
 Connections : NPT, BSP, Socket
 Weld Flanges upon request

Typical applications

These traps are recommended for all types of presses using steam.

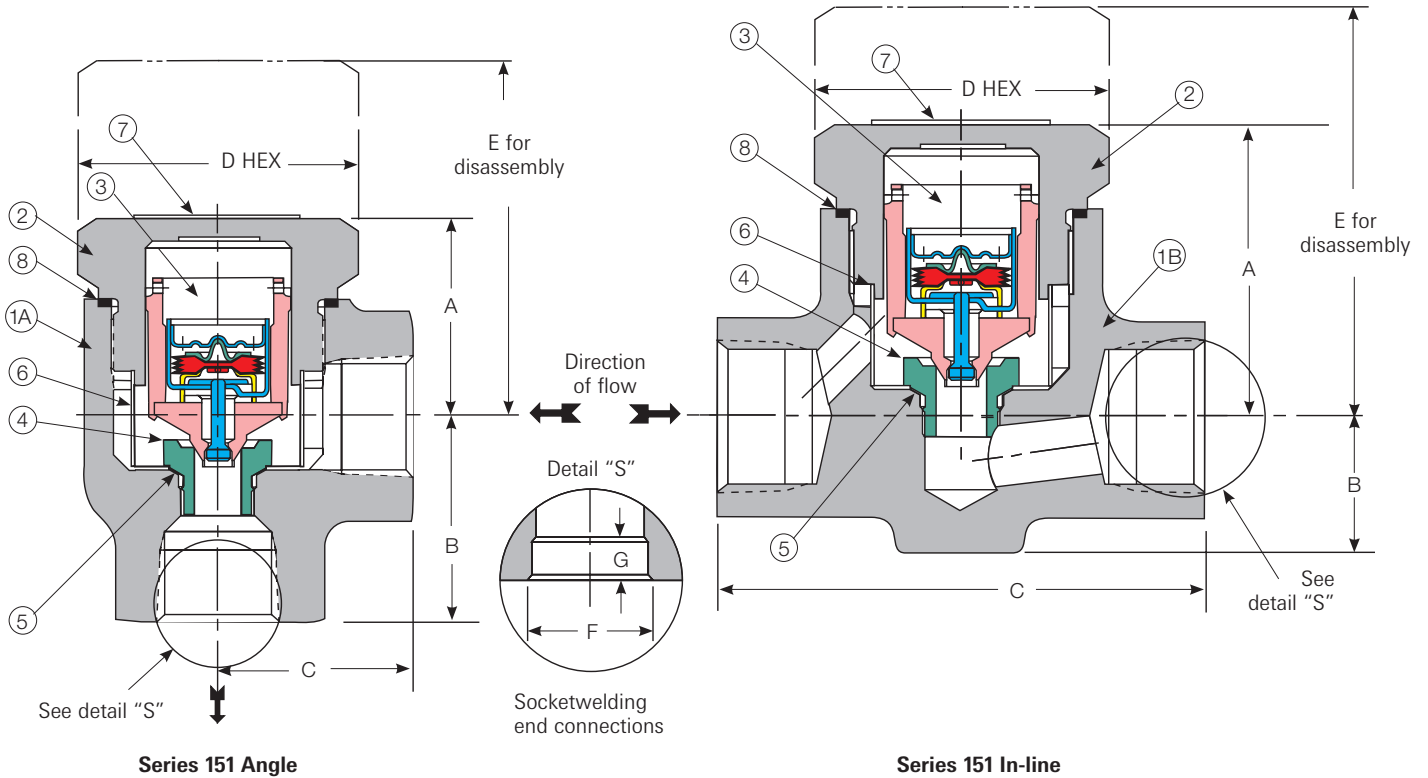


Operating Principle

Series 152 traps have two valves. The Pilot Valve, which functions thermostatically, is sensitive to fluid conditions arriving at the trap. Therefore, it responds fast to changes in temperature, and can handle low rates of condensate flow. The main valve, which functions fluid dynamically, stays closed until the condensate load exceeds the capability of the pilot valve. The main valve then lifts and both valves discharge at full rating. In normal operation the pilot valve continuously drains condensate, closing only in the absence of condensate.

Thermostatic Steam traps 1/2" - 3/4" - 1"

Series 151 - 152



Series 151 Angle

Series 151 In-line

Dimensions/Weights									
Fig. No.	Size in. (DN)	Dimensions, in. (mm)					Weight		
		A	B	C	D	E	F	G	lb. (kg)
151	3/4 (20)	1 7/8 (48)	1 7/8 (45)	1 3/4 (44)	2 1/4 (57)	3 (76)	1070 (28)	1/2 (13)	4 1/2 (2)
152	3/4 (20)	2 5/8 (67)	1 3/16 (30)	4 5/16 (110)	2 1/4 (57)	4 (100)	1070 (28)	1/2 (13)	4 1/2 (2)
152	1 (25)	2 5/8 (67)	1 5/16 (33)	4 5/8 (118)	3 1/4 (57)	4 (100)	1335 (34)	1/2 (13)	5 (2.3)

Parts/Materials		
Item	Part	Materials
1A	Body 151	ASME SA-105, Carbon Steel
	Body 151S	ASME SA182 316L, Stainless Steel
1B	Body 152	ASME SA-182, F11, Cr.-Mo. 0.15% Maximum Carbon
	Body 152S	ASME SA182 316L, Stainless Steel
2	Bonnet	ASTM A-582 416, Stainless Steel
3*	Cage Assembly	Stainless Steel
4*	Seat	Stainless Steel
5*		
6*	Gasket, Seat	Monel
7	Screen	302 Stainless Steel
8*	Gasket, Bonnet	Monel Clad Non-asbestos

* Denotes available repair kit